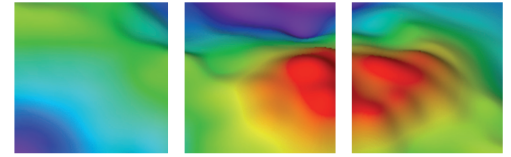


EMGS Multi-Client Services

Empowering exploration



Project summary

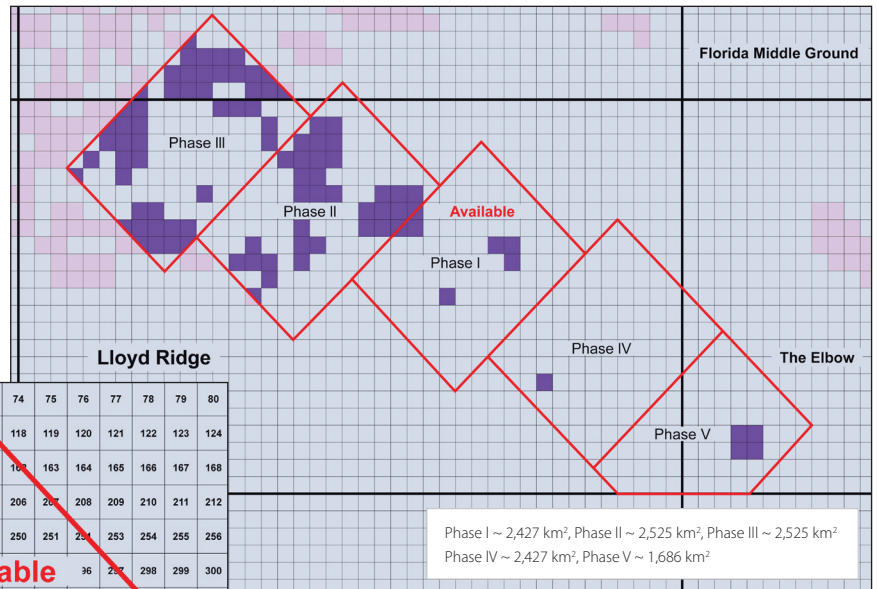


Area: Lloyd Ridge
Country: USA
Type of data: Clearplay Find
Data acquisition: Commenced Nov 08

Lloyd Ridge, USA

Exploration focus

Many industry experts believe that the Lloyd Ridge area in the eastern Gulf of Mexico could be the next great frontier exploration opportunity in the U.S. Gulf of Mexico. Lloyd Ridge overlaps the MMS Central and Eastern GoM planning areas and will be available in future lease sales. This area has a high potential for hydrocarbons exploration and production because of the presence of known hydrocarbons source and the proximity to prolific production to the west. Water depths range from 1800 meters to greater than 3000 meters.



| | | | | | | | | | | | | | | | | | | | | | | | | |
|----|-----|-----|-----|-----|-----|-----|-----|-----|-----|-----|-----|-----|-----|-----|-----|-----|-----|-----|-----|-----|-----|-----|-----|-----|
| 57 | 58 | 59 | 60 | 61 | 62 | 63 | 64 | 65 | 66 | 67 | 68 | 69 | 70 | 71 | 72 | 73 | 74 | 75 | 76 | 77 | 78 | 79 | 80 | |
| 0 | 101 | 102 | 103 | 104 | 105 | 106 | 107 | 108 | 109 | 110 | 111 | 112 | 113 | 114 | 115 | 116 | 117 | 118 | 119 | 120 | 121 | 122 | 123 | 124 |
| 4 | 145 | 146 | 147 | 148 | 149 | 150 | 151 | 152 | 153 | 154 | 155 | 156 | 157 | 158 | 159 | 160 | 161 | 162 | 163 | 164 | 165 | 166 | 167 | 168 |
| 8 | 189 | 190 | 191 | 192 | 193 | 194 | 195 | 196 | 197 | 198 | 199 | 200 | 201 | 202 | 203 | 204 | 205 | 206 | 207 | 208 | 209 | 210 | 211 | 212 |
| 2 | 233 | 234 | 235 | 236 | 237 | 238 | 239 | 240 | 241 | 242 | 243 | 244 | 245 | 246 | 247 | 248 | 249 | 250 | 251 | 252 | 253 | 254 | 255 | 256 |
| 6 | 277 | 278 | 279 | 280 | 281 | 282 | 283 | 284 | 285 | 286 | 287 | 288 | 289 | 290 | 291 | 292 | 293 | 294 | 295 | 296 | 297 | 298 | 299 | 300 |
| 0 | 321 | 322 | 323 | 324 | 325 | 326 | 327 | 328 | 329 | 330 | 331 | 332 | 333 | 334 | 335 | 336 | 337 | 338 | 339 | 340 | 341 | 342 | 343 | 344 |
| 4 | 365 | 366 | 367 | 368 | 369 | 370 | 371 | 372 | 373 | 374 | 375 | 376 | 377 | 378 | 379 | 380 | 381 | 382 | 383 | 384 | 385 | 386 | 387 | 388 |
| 8 | 409 | 410 | 411 | 412 | 413 | 414 | 415 | 416 | 417 | 418 | 419 | 420 | 421 | 422 | 423 | 424 | 425 | 426 | 427 | 428 | 429 | 430 | 431 | 432 |
| 2 | 453 | 454 | 455 | 456 | 457 | 458 | 459 | 460 | 461 | 462 | 463 | 464 | 465 | 466 | 467 | 468 | 469 | 470 | 471 | 472 | 473 | 474 | 475 | 476 |
| 6 | 497 | 498 | 499 | 500 | 501 | 502 | 503 | 504 | 505 | 506 | 507 | 508 | 509 | 510 | 511 | 512 | 513 | 514 | 515 | 516 | 517 | 518 | 519 | 520 |
| 0 | 541 | 542 | 543 | 544 | 545 | 546 | 547 | 548 | 549 | 550 | 551 | 552 | 553 | 554 | 555 | 556 | 557 | 558 | 559 | 560 | 561 | 562 | 563 | 564 |
| 4 | 585 | 586 | 587 | 588 | 589 | 590 | 591 | 592 | 593 | 594 | 595 | 596 | 597 | 598 | 599 | 600 | 601 | 602 | 603 | 604 | 605 | 606 | 607 | 608 |
| 8 | 629 | 630 | 631 | 632 | 633 | 634 | 635 | 636 | 637 | 638 | 639 | 640 | 641 | 642 | 643 | 644 | 645 | 646 | 647 | 648 | 649 | 650 | 651 | 652 |
| 2 | 673 | 674 | 675 | 676 | 677 | 678 | 679 | 680 | 681 | 682 | 683 | 684 | 685 | 686 | 687 | 688 | 689 | 690 | 691 | 692 | 693 | 694 | 695 | 696 |
| 6 | 717 | 718 | 719 | 720 | 721 | 722 | 723 | 724 | 725 | 726 | 727 | 728 | 729 | 730 | 731 | 732 | 733 | 734 | 735 | 736 | 737 | 738 | 739 | 740 |

Operational methodology

The Lloyd Ridge project has been acquired using Clearplay Find. Key features include:

- 1 km in-line receiver sampling enables inversion of data to deliver powerful resistivity profiles along source lines. Dense sampling also allows confident interpretation of small resistive anomalies.
- Dense receiver lines coincident with 2D seismic for direct correlation of EM and seismic data.
- Sparse wide azimuth grid (~ 3.0 to 3.4 km) enables generation of 3D attribute volumes for rapid evaluation using standard interpretation systems.
- Multi-frequency source signature designed to map shallow resistors such as hydrates, as well as identifying deeper resistors related to potential reservoirs and salt and regional lithology changes.

Survey deliverables

Standard Delivery:

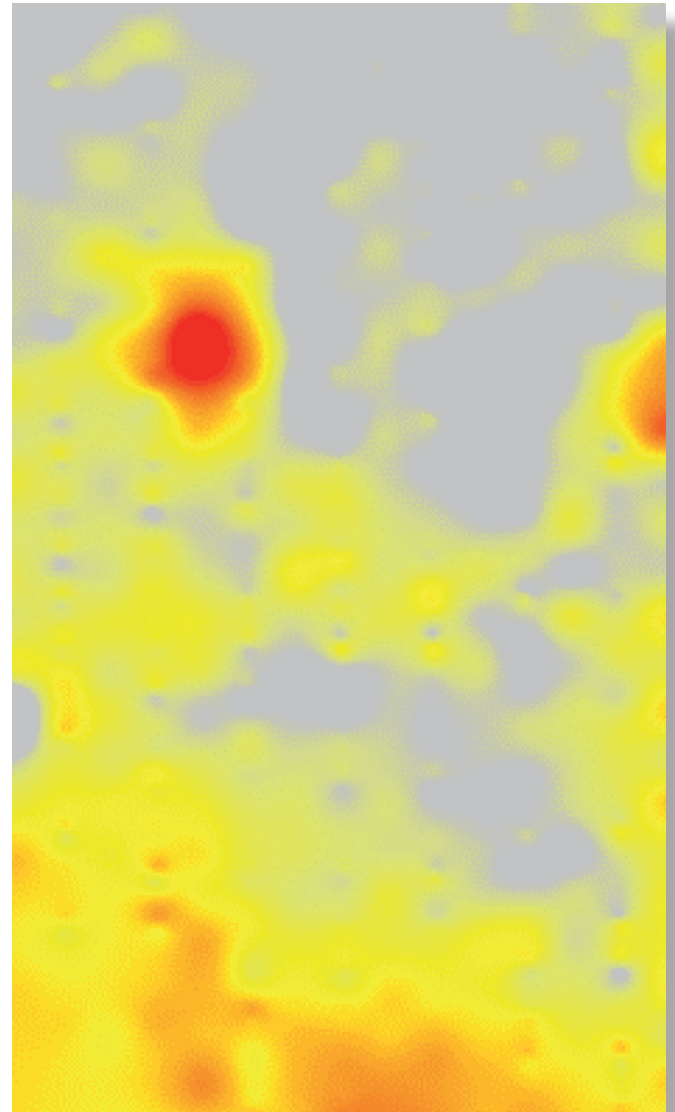
Processed results – Standard delivery, common deadlines

- Processed data and processing report, raw data as requested
- 2D resistivity cross-sections based on inversion of densely sampled lines (SEG-Y)
- Attribute cubes for a single synthetic reference receiver
- Post delivery G&G support

Advanced Delivery:

Interpretive results – On demand and client specific

- 3D background resistivity model based on further integration of client inputs
- Integrated advanced attribute cubes (SEG-Y)



Lloyd Ridge – Normalized electric magnitude 0.8 Hz – 5km offset

North and South America

Carl Hutchins
Houston, USA
chutchins@emgs.com
+1 713 819 4883

For more information about EMGS and EM imaging, please visit emgs.com

Finding hydrocarbons™

emgs.com

