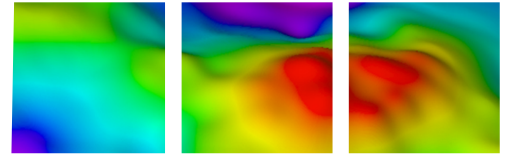


EMGS Multi-Client Services

Empowering exploration



Project summary



Area: Alaminos Canyon
 Country: USA
 Type of data: Clearplay Find
 Data acquisition: Jun - Oct 2008

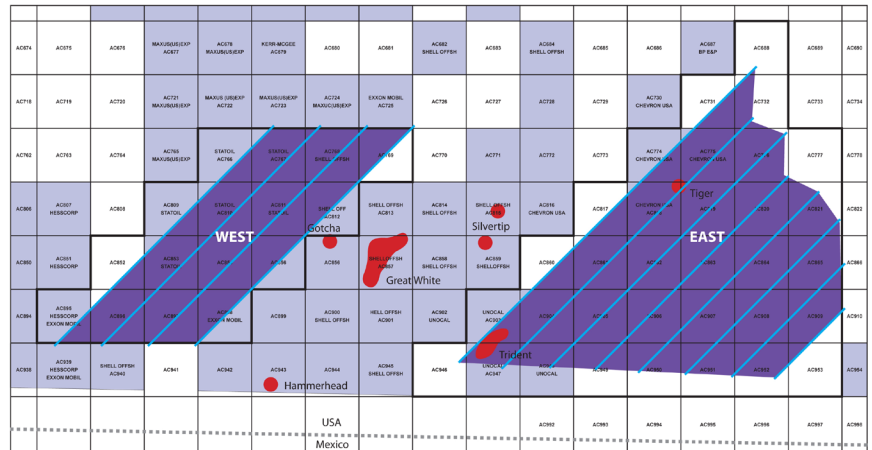
Alaminos Canyon, USA

Exploration focus

The Lower Tertiary (Deep Wilcox) Trend in the Alaminos Canyon Area of the Perdido fold belt, U.S. Gulf of Mexico has received much exploration attention since the drilling of the BAHA 2 well in March 2001, when industry recognized the potential for extensive deepwater turbidite sands in this area.

Subsequent additional discoveries at the Trident and Great White prospects south of the salt canopy, demonstrated the significant potential of the Lower Tertiary Trend more than 250 miles basin ward of its onshore depocenter.

EMGS has performed two EM surveys in Alaminos Canyon, and the technique has already proven successful in the area.



Two areas are immediately available (full coverage area shown in blue above): Alaminos Canyon (West) is located west of Great White, and comprises approximately 235 km² full coverage + 158 km² partial coverage. Alaminos Canyon (East) covers the Tiger Field, and comprises 490 km² full coverage + 308 km² partial coverage.

Alaminos Canyon is one of the hottest areas of the Gulf of Mexico today. Recent lease sales have attracted bids over \$60M. This data delivers licensees a unique competitive edge.

Operational methodology

The Alaminos Canyon project has been acquired using Clearplay Find. Key features include:

- 1 km in-line receiver sampling enables inversion of data to deliver powerful resistivity profiles along source lines. Dense sampling also allows confident interpretation of small resistive anomalies.
- Sparse wide azimuth grid (<3km) enables generation of 3D attribute volumes for rapid evaluation using standard interpretation systems.
- Multi-frequency source signature designed to map shallow resistors such as hydrates, as well as identifying deeper resistors related to potential reservoirs, as well as salt and regional lithology changes.

Survey deliverables

Standard Delivery:

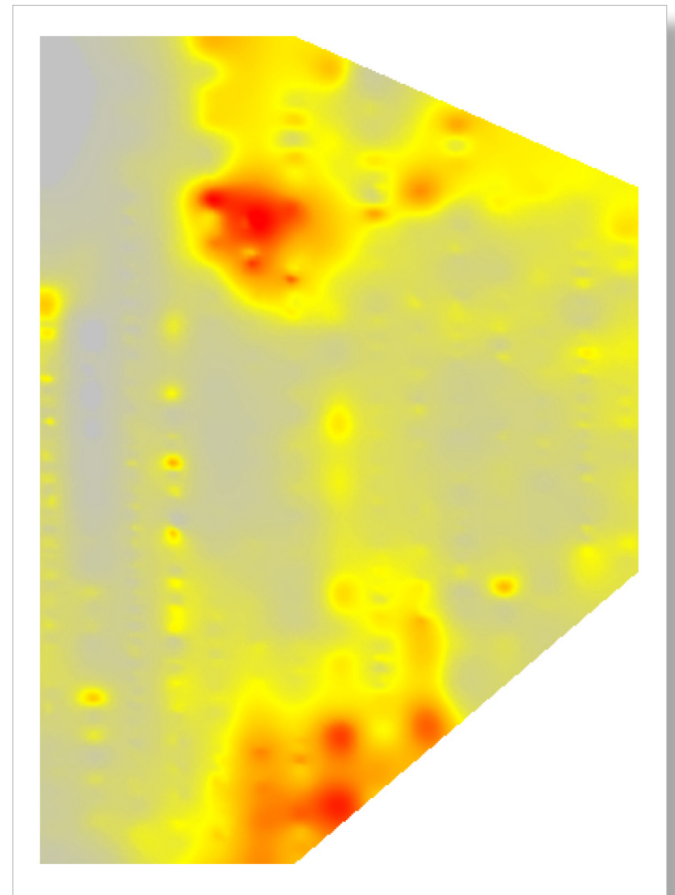
Processed results – Standard delivery, common deadlines

- Processed data and processing report, raw data as requested
- 2D resistivity cross-sections based on inversion of densely sampled lines (SEG-Y)
- Attribute cubes for a single synthetic reference receiver
- Post delivery G&G support

Advanced Delivery:

Interpretive results – On demand and client specific

- 3D background resistivity model based on further integration of client inputs
- Integrated advanced attribute cubes (SEG-Y)



Normalized electric magnitude 0.4 Hz – 4km offset

North and South America

Carl Hutchins
Houston, USA
chutchins@emgs.com
+1 713 819 4883

For more information about EMGS and EM imaging, please visit emgs.com

Finding hydrocarbons™

emgs.com

